



**Road Running Technical Council
USA Track & Field**

Measurement Certificate



Name of the course Aspen Valley Half Marathon Distance 21.0975 km
 Location (state) CO (city) Aspen
 Type of course: Road Race
 Measuring Methods: Bicycle
 Measured By Doug Thurston, P. O. Box 2922, Santa Fe, NM 87504, tallmtnbiker@yahoo.com, 916-802-7668
 Race Contact Kat Fitzgerald, PO Box 423, Aspen, CO 81612, (970) 319-9435, aspenvalleymarathon@gmail.com
 Date(s) when course measured: 04/18/2024
 Number of measurements of entire course: 2 Course Configuration: Point-to-point
 Elevation (meters above sea level) Start 2,257.00 Finish 2,015.00 Lowest 2,013.00 Highest 2,289.00
 Straight line distance between start and finish 18521m Drop 11.44 m/km Separation 87.80 %
 Type of surface: Paved 98 % Dirt 0 % Gravel 1 % Grass 1 % Track 0 %
 Effective date of certification: June 18, 2024 Certification code: CO24002DT

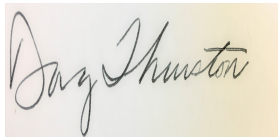
Note to Race Director: Use this Certification Code in all public announcements relating to your race.

Be It Officially Noted That

Based on examination of data provided by the above named measurer, the course described above and in the map attached is hereby certified as reasonably accurate in measurement according to the standards adopted by the Road Running Technical Council. If any changes are made to the course, this certification becomes void, and the course must then be recertified.

Verification of Course --- In the event a National Open Record is set on the course, or at the discretion of USA Track & Field, a verification measurement may be required to be performed by a member of the Road Running Technical Council. If such a remeasurement shows the course to be short, then all pending records will be rejected and the course certification will be cancelled.

This certification expires on December 31 of the year: **2034**



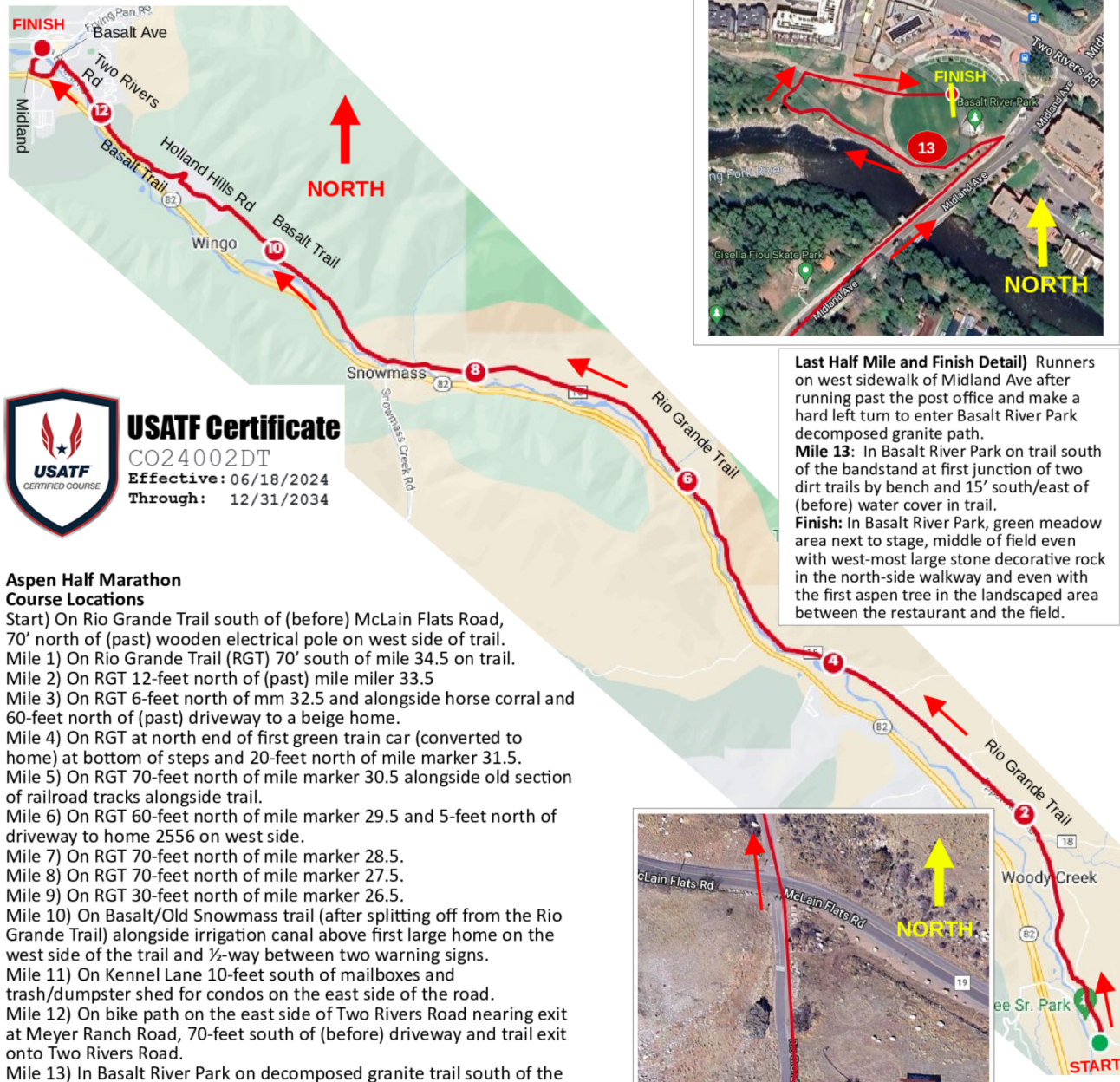
AS NATIONALLY CERTIFIED BY:

Date: June 18, 2024

Doug Thurston - USATF/RRTC Certifier - P. O. Box 2922, Santa Fe NM 87504
 (916) 802-7668 - tallmtnbiker@yahoo.com

Aspen Valley Half Marathon, Aspen, Colorado, USA, 21.0975 km

Measured 4/18/2024 by Doug Thurston World Athletics/AIMS Level A measurer. Contact: Doug Thurston, (916) 802-7668, tallmtnbiker@yahoo.com, and Sean Solon. Point-to-point course from north Aspen to Basalt, Colorado, mostly on the Rio Grande and Basalt paved bike trails.



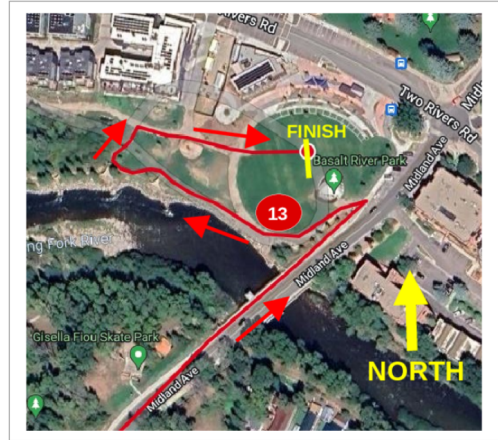
USATF Certificate
 CO24002DT
 Effective: 06/18/2024
 Through: 12/31/2034

Aspen Half Marathon Course Locations

- Start) On Rio Grande Trail south of (before) McLain Flats Road, 70' north of (past) wooden electrical pole on west side of trail.
- Mile 1) On Rio Grande Trail (RGT) 70' south of mile 34.5 on trail.
- Mile 2) On RGT 12-feet north of (past) mile miler 33.5
- Mile 3) On RGT 6-feet north of mm 32.5 and alongside horse corral and 60-feet north of (past) driveway to a beige home.
- Mile 4) On RGT at north end of first green train car (converted to home) at bottom of steps and 20-feet north of mile marker 31.5.
- Mile 5) On RGT 70-feet north of mile marker 30.5 alongside old section of railroad tracks alongside trail.
- Mile 6) On RGT 60-feet north of mile marker 29.5 and 5-feet north of driveway to home 2556 on west side.
- Mile 7) On RGT 70-feet north of mile marker 28.5.
- Mile 8) On RGT 70-feet north of mile marker 27.5.
- Mile 9) On RGT 30-feet north of mile marker 26.5.
- Mile 10) On Basalt/Old Snowmass trail (after splitting off from the Rio Grande Trail) alongside irrigation canal above first large home on the west side of the trail and 1/2-way between two warning signs.
- Mile 11) On Kennel Lane 10-feet south of mailboxes and trash/dumpster shed for condos on the east side of the road.
- Mile 12) On bike path on the east side of Two Rivers Road nearing exit at Meyer Ranch Road, 70-feet south of (before) driveway and trail exit onto Two Rivers Road.
- Mile 13) In Basalt River Park on decomposed granite trail south of the bandstand at first junction of two dirt trails by bench and 15-feet south of (before) irrigation water cover imbedded in dirt trail.
- Finish) In Basalt River Park, green meadow area next to stage, middle of field even with west-most large stone decorative rock in the north-side walkway and even with the first aspen tree in the landscaped area between the restaurant and the field.

Course Notes:

- A) Measured shortest possible route except with traffic in downtown Aspen in first mile.
- B) Runners run on sidewalk around park at mile approx. 1.5 before joining Rio Grande Trail.
- C) Runners run with traffic on Holland Hills Road, Two Rivers Road, and Basalt Ave. Runners are on sidewalk on Midland Avenue.
- D) Mile locations shown on map are approximate. Accurate locations are on "Course Locations" list.



Last Half Mile and Finish Detail) Runners on west sidewalk of Midland Ave after running past the post office and make a hard left turn to enter Basalt River Park decomposed granite path.
Mile 13: In Basalt River Park on trail south of the bandstand at first junction of two dirt trails by bench and 15' south/east of (before) water cover in trail.
Finish: In Basalt River Park, green meadow area next to stage, middle of field even with west-most large stone decorative rock in the north-side walkway and even with the first aspen tree in the landscaped area between the restaurant and the field.



Start: On Rio Grande Trail south of (before) McLain Flats Road, 70-feet north of (past) large wooden electrical pole on west side.