



*Road Running Technical Council  
USA Track & Field  
Measurement Certificate*



Name of the course Boulderthon Half Marathon Distance 21.0975 km  
Location (state) CO (city) Boulder  
Type of course: Road Race  
Measuring Methods: Bicycle  
Measured By Doug Thurston, P. O. Box 2922, Santa Fe, NM 87504, tallmtnbiker@yahoo.com, 916-802-7668  
Race Contact Phil Dumontet, 1320 Onyx Circle, Longmont, CO 80504, (303) 960-2205, phil@boulderthon.org  
Date(s) when course measured: 05/19/2025, 05/20/2025  
Number of measurements of entire course: 2 Course Configuration: Partial loop  
Elevation (meters above sea level) Start 1,627.00 Finish 1,632.00 Lowest 1,587.00 Highest 1,644.00  
Straight line distance between start and finish 279m Drop -0.24 m/km Separation 1.32 %  
Type of surface: Paved 100 % Dirt 0 % Gravel 0 % Grass 0 % Track 0 %  
Effective date of certification: August 18, 2025 Certification code: CO25005DT

Note to Race Director: Use this Certification Code  
in all public announcements relating to your race.

## *Be It Officially Noted That*

Based on examination of data provided by the above named measurer, the course described above and in the map attached is hereby certified as reasonably accurate in measurement according to the standards adopted by the Road Running Technical Council. If any changes are made to the course, this certification becomes void, and the course must then be recertified.

**Verification of Course ---** In the event a National Open Record is set on the course, or at the discretion of USA Track & Field, a verification measurement may be required to be performed by a member of the Road Running Technical Council. If such a remeasurement shows the course to be short, then all pending records will be rejected and the course certification will be cancelled.

***This certification expires on December 31 of the year:*** **2035**

**AS NATIONALLY CERTIFIED BY:**

Date: August 18, 2025

Doug Thurston - USATF/RRTC Certifier - P. O. Box 2922, Santa Fe NM 87504  
(916) 802-7668 - tallmtnbiker@yahoo.com

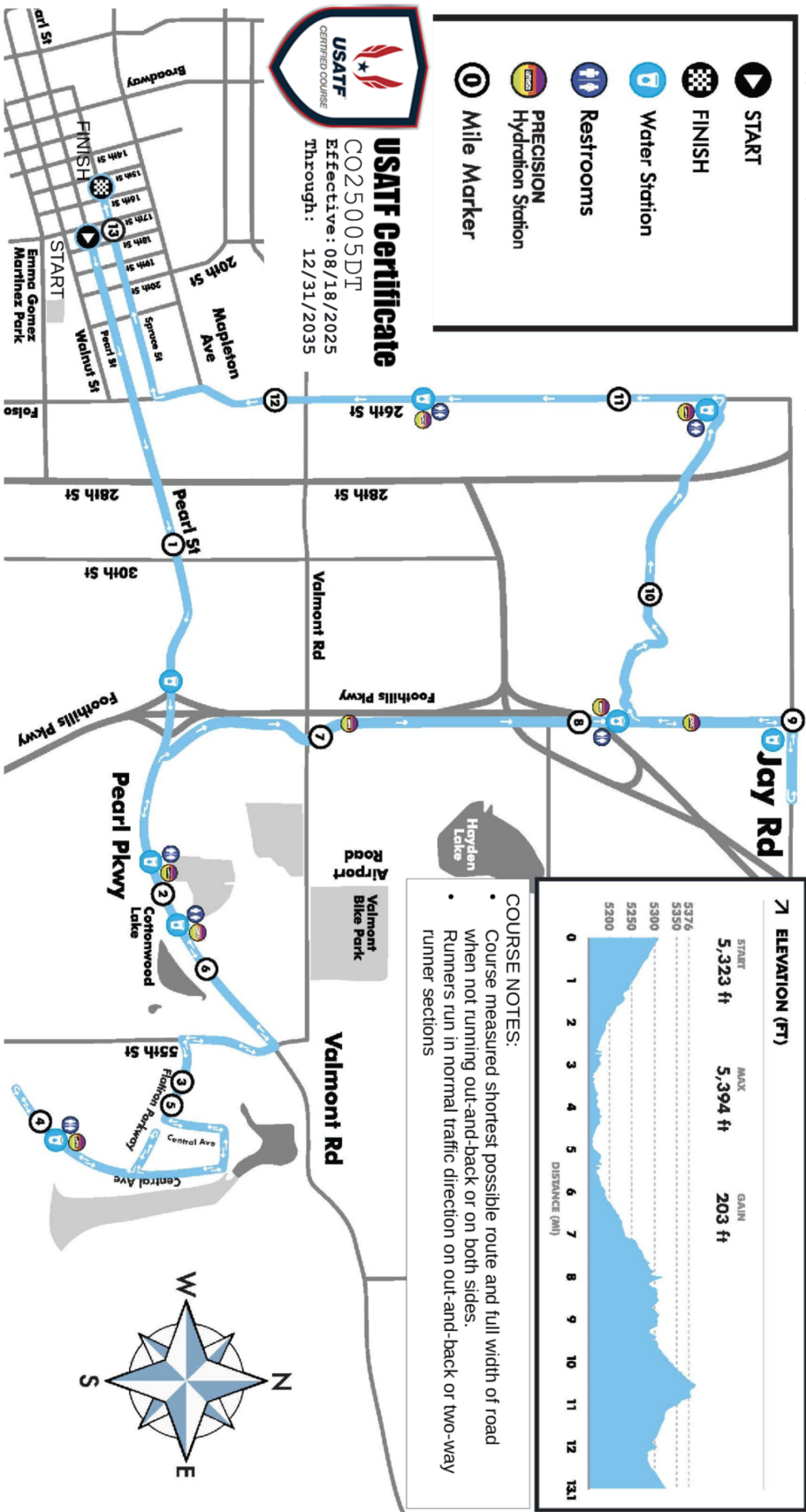
**Boulderthon Half Marathon**  
 21.0975 km/13.10938 miles  
 Boulder, Colo., USA

As measured 5-19 & 20-2025 by Doug Thurston, World Athletics/AIMS Level A Measurer, and Brian Lyons

**Major Course Locations**

**Start:** On Pearl Street at east-most curb cut (expansion for parking lane) on west side of intersection with 16<sup>th</sup> Street and even with west edge of green bench on sidewalk, northwest corner.  
**Flatiron Parkway Turnaround:** On Flatiron Pkwy., running west to a counter-clockwise turn-around, 9' west of (after) "no park" icon sign on southeast corner with Central Ave.  
**Central Ave. Turn-around:** On Central Ave. turning from right to left (counterclockwise) at manhole cover in middle of intersection with 57<sup>th</sup> Court.  
**North Turn-around:** On Jay Rd., right to left (counterclockwise) at west edge of east driveway to 4901 on north side.  
**Finish:** On Spruce St. 1/2-way between 16<sup>th</sup> and 15<sup>th</sup> Streets even with the middle of glass doors on office building at 1518 on south side and 5' west of sign for parking pay kiosk for zone 95312.

(See supplemental map for additional detail maps and course locations.)



**Boulderthon Half Marathon**  
**21.0975 km/13.10938 miles**  
**Boulder, Colo., USA**

As measured 5-19 & 20-2025 by Doug Thurston, World Athletics/AIMS Level A Measurer, and Brian Lyons

**Course Locations**

**Start:** On Pearl Street at east-most curb cut (expansion for parking lane) on west side of intersection with 16<sup>th</sup> Street and even with west edge of green bench on sidewalk, northwest corner.

**Mile 1:** On Pearl St. 100' west of (before) 30<sup>th</sup> St.

**Mile 2:** On Pearl Pkwy. 150' west of (before) driveway to Jeep dealership, north side (marked on south side).

**Mile 3:** On Flatrons Pkwy., south side of median, 30' west of driveway to bldgs. 5600/5610 on south side. Boulder County Sheriff's/Coroner's office.

**Flatiron Parkway Turnaround:** On Flatiron Pkwy., running west to a counter-clockwise turn-around, 9' west of (after) "no park" icon sign on southeast corner with Central Ave.

**Mile 4:** On Central Ave. at south edge of driveway to bldg. 2205/2207/2209 on west wide of road and 20' north of (before) light blue and white fire hydrant on the west side.

**Central Ave. Turn-around:** On Central Ave. turning from right to left (counterclockwise) at manhole cover in middle of intersection with 57<sup>th</sup> Court.

**Mile 5:** On Flatiron Pkwy. 100' west of (after) turn from Central Ave. and 30' west of (before) and across from sign for building 5700.

**Mile 6:** At 5075 Pearl Pkwy. at exit drive from Fowler Jeep service building.

**Mile 7:** On 47<sup>th</sup> St. just north of Valmont Road 10' south of icon sign for "20 MPH" with a left-right turn arrow.

**Mile 8:** On 47<sup>th</sup> St. north of bridge over the Diagonal Hwy and 50' south of (before) entrance to Pleasant View Fields soccer complex/park.

**North Turn-Around:** On Jay Rd., right to left (counterclockwise) at west edge of east driveway to 4901 on north side.

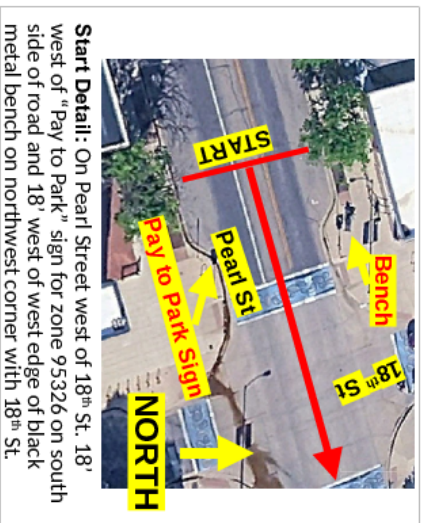
**Mile 9:** On Jay Rd. after turn-around 40' east of (before) N. 47<sup>th</sup> St. (where runners turn left).

**Mile 10:** On bike path west of 47<sup>th</sup> St., north side of Pleasant View Soccer Park and on north side of creek 150' east of (before) raised service area/manhole cover and at green electrical box for home on north side of path.

**Mile 11:** On 26<sup>th</sup> St. on south side of intersection with Keller Farm Dr. and 100' north of (before) driveway to home 3770 on east side.

**Mile 12:** On Folsom Blvd./26<sup>th</sup> Street 125' south of (after) Valmont Rd. and 6' south of (after) start of concrete bike lane drive curb, east side.

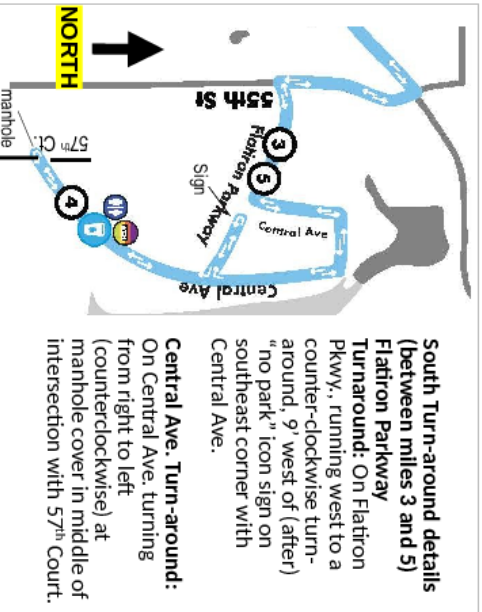
**Mile 13:** On Spruce St. 5' west of (after) east cross walk at Spruce and 17<sup>th</sup> St.  
**Finish:** On Spruce St. 1/2-way between 16<sup>th</sup> and 15<sup>th</sup> Streets even with the middle of glass doors on office building at 1518 on south side and 5' west of sign for parking pay kiosk for zone 95312.



**Start Detail:** On Pearl Street west of 18<sup>th</sup> St. 18' west of "Pay to Park" sign for zone 95326 on south side of road and 18' west of west edge of black metal bench on northwest corner with 18<sup>th</sup> St.



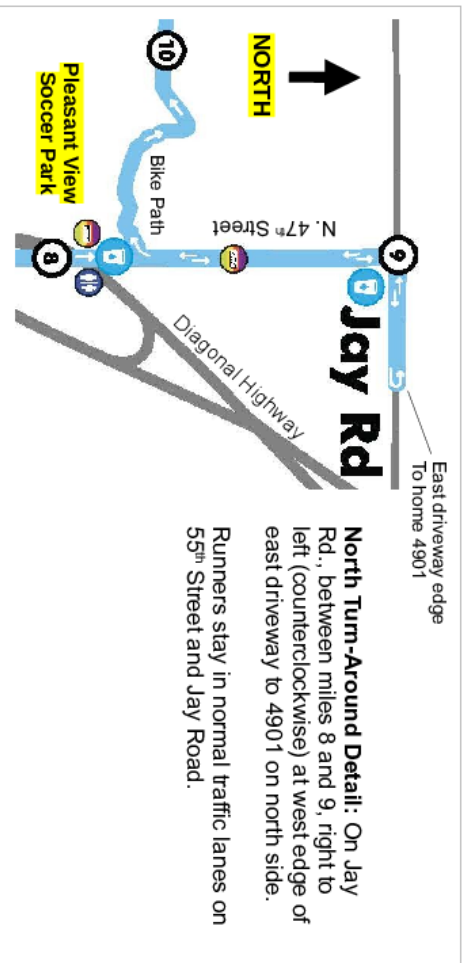
**Finish Detail:** On Spruce St. 1/2-way between 16<sup>th</sup> and 15<sup>th</sup> Streets even with the middle of glass doors on office building at 1518 on south side and 5' west of sign for parking pay kiosk for zone 95312.



**South Turn-around details (between miles 3 and 5)**

**Flatiron Parkway Turnaround:** On Flatiron Pkwy., running west to a counter-clockwise turn-around, 9' west of (after) "no park" icon sign on southeast corner with Central Ave.

**Central Ave. Turn-around:** On Central Ave. turning from right to left (counterclockwise) at manhole cover in middle of intersection with 57<sup>th</sup> Court.



**North Turn-Around Detail:** On Jay Rd., between miles 8 and 9, right to left (counterclockwise) at west edge of east driveway to 4901 on north side.

Runners stay in normal traffic lanes on 55<sup>th</sup> Street and Jay Road.