



*Road Running Technical Council
USA Track & Field
Measurement Certificate*



Name of the course Santee Half Marathon Race Walk Championship Distance 21.0975 km
Location (state) CA (city) Santee
Type of course: Road Race
Measuring Methods: Steel Tape
Measured By Doug Thurston, P. O. Box 2922, Santa Fe, NM 87504, tallmtnbiker@yahoo.com, 916-802-7668
Race Contact Tracy Sundlun, 10942 Hillcreek Rd., Santee, CA 92071, (619) 726-1952, tracysundlun@gmail.com
Date(s) when course measured: 10/17/2025, 11/28/2022
Number of measurements of entire course: 2 Course Configuration: Loop
Elevation (meters above sea level) Start 106.00 Finish 106.00 Lowest 104.00 Highest 106.00
Straight line distance between start and finish 96.8m Drop 0.46 m/km Separation 0.00 %
Type of surface: Paved 100 % Dirt 0 % Gravel 0 % Grass 0 % Track 0 %
Effective date of certification: December 7, 2025 Certification code: CA22028DT

Note to Race Director: Use this Certification Code
in all public announcements relating to your race.

Be It Officially Noted That

Based on examination of data provided by the above named measurer, the course described above and in the map attached is hereby certified as reasonably accurate in measurement according to the standards adopted by the Road Running Technical Council. If any changes are made to the course, this certification becomes void, and the course must then be recertified.

Verification of Course --- In the event a National Open Record is set on the course, or at the discretion of USA Track & Field, a verification measurement may be required to be performed by a member of the Road Running Technical Council. If such a remeasurement shows the course to be short, then all pending records will be rejected and the course certification will be cancelled.

This certification expires on December 31 of the year: **2032**

AS NATIONALLY CERTIFIED BY:

Date: December 7, 2025

Doug Thurston - USATF/RRTC Certifier - P. O. Box 2922, Santa Fe NM 87504
(916) 802-7668 - tallmtnbiker@yahoo.com

Santee Half Marathon Race Walk Championship

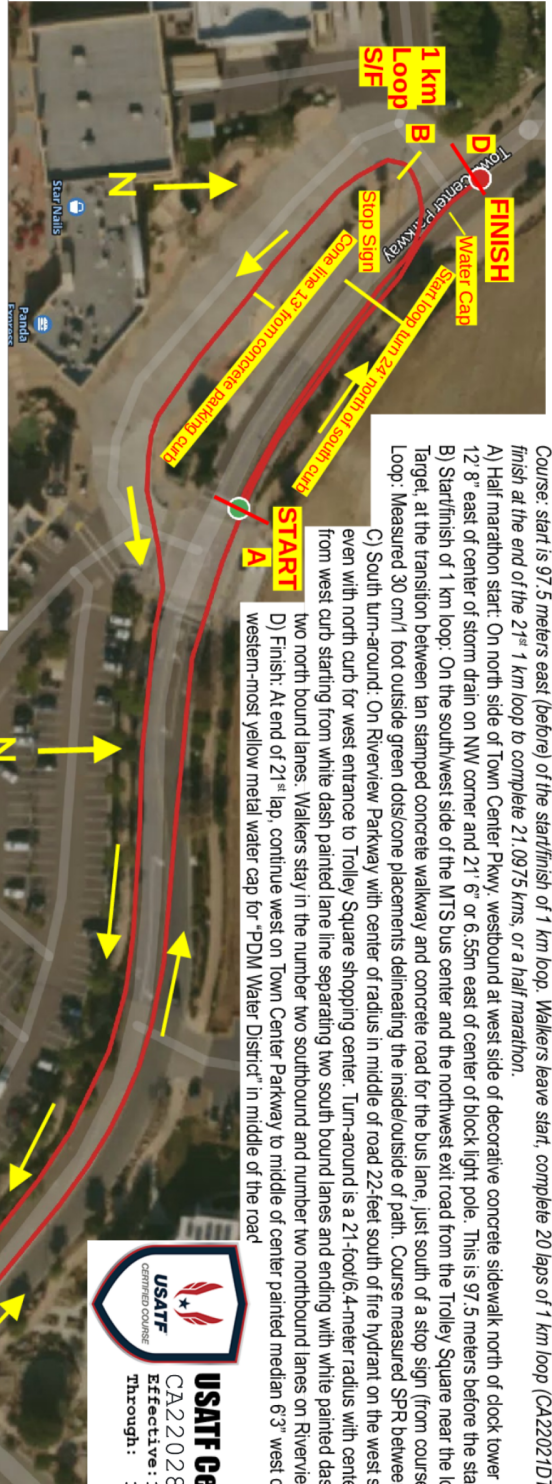
Santee, Calif., 21.0975 km, 13.10938 miles
 Measured October 17, 2025, by Doug Thurston & November 28, 2022, by Doug Thurston, and Todd Byers, both World Athletics/AIMS A measurers. Measurer contact Doug Thurston, (916) 802-7668, talimhbiker@yahoo.com.

Course: start is 97.5 meters east (before) of the start/finish of 1 km loop. Walkers leave start, complete 20 laps of 1 km loop (CA22021DT), then continue to finish at the end of the 2nd 1 km loop to complete 21.0975 kms, or a half marathon.

A) Half marathon start: On north side of Town Center Pkwy, westbound at west side of decorative concrete sidewalk north of clock tower and sign for Target, 12' 8" east of center of storm drain on NW corner and 21' 6" or 6.55m east of center of block light pole.
 B) Start/finish of 1 km loop: On the southwest side of the MTS bus center and the northwest exit road from the Trolley Square near the loading dock for Target, at the transition between tan stamped concrete walkway and concrete road for the bus lane, just south of a stop sign (from course CA22021DT). Loop: Measured 30 cm/1 foot outside green dots/cone placements delineating the inside/outside of path. Course measured SPR between green dots.

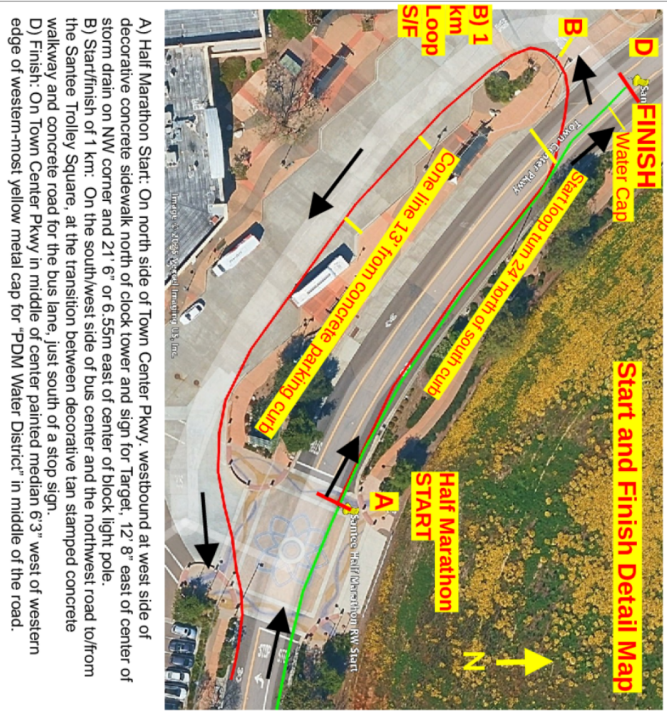
C) South turn-around: On Riverview Parkway with center of radius in middle of road 22-feet south of fire hydrant on the west side of road and even with north curb for west entrance to Trolley Square shopping center. Turn-around is a 21-foot/6.4-meter radius with center of radius 39' 7" from west curb starting from white dash painted lane line separating two south bound lanes and ending with white painted dash line separating two north bound lanes. Walkers stay in the number two southbound and number two northbound lanes on Riverview Parkway.

D) Finish: At end of 2nd lap, continue west on Town Center Parkway to middle of center painted median 6'3" west of western edge of western-most yellow metal cap for "PDM Water District" in middle of the road



USATF Certificate
 CA22028DT
 Effective: 12/07/2025
 Through: 12/31/2032

Course Notes:
 1. Course measured 30 cm/1 foot from cone locations, designated on course by green painted dots and several PK nails/washers.
 2. Course measured using the shortest possible route unless noted otherwise.
 3. Walkers stay in no. 2 southbound lane on Riverview Parkway southbound and turn counter clockwise and walk in no. 2 northbound lane to Town Center Parkway (E).
 4. Walkers turn west from no. 2 northbound lane on Riverview Parkway to 30 cm/1' north of double yellow line/center divider on Town Center Parkway (F).



A) Half Marathon Start: On north side of Town Center Pkwy, westbound at west side of decorative concrete sidewalk north of clock tower and sign for Target, 12' 8" east of center of storm drain on NW corner and 21' 6" or 6.55m east of center of block light pole.
 B) Start/finish of 1 km: On the southwest side of bus center and the northwest road to/from the Santee Trolley Square, at the transition between decorative tan stamped concrete walkway and concrete road for the bus lane, just south of a stop sign.
 D) Finish: On Town Center Pkwy in middle of center painted median 6'3" west of western edge of western-most yellow metal cap for "PDM Water District" in middle of the road.



C) South turn-around: On Riverview Parkway with center of radius in middle of road 22-feet south of fire hydrant on the west side of road and even with north curb for west entrance to Trolley Square shopping center. Turn-around is a 21-foot/6.4-meter radius with center of radius 39' 7" from west curb starting from white dash painted lane line separating two south bound lanes and ending with white painted dash line separating two north bound lanes.