



*Road Running Technical Council
USA Track & Field
Measurement Certificate*



Name of the course St. Luke's D&L RaceFest Half Marathon Distance 21.0975 km
Location (state) PA (city) Easton
Type of course: Road Race
Measuring Methods: Bicycle
Measured By Doug Thurston, P. O. Box 2922, Santa Fe, NM 87504, tallmtnbiker@yahoo.com, 916-802-7668
Race Contact Michael Drabenstott, 2750 Hugh Moore Pk Rd, Easton PA 18042, 610-417-0503, michael@drabenstottcomm
Date(s) when course measured: 08/11/2023
Number of measurements of entire course: 2 Course Configuration: Point-to-point
Elevation (meters above sea level) Start 87.00 Finish 55.00 Lowest 55.00 Highest 94.00
Straight line distance between start and finish 16624m Drop 1.49 m/km Separation 79.00 %
Type of surface: Paved 11 % Dirt 0 % Gravel 89 % Grass 0 % Track 0 %
Effective date of certification: November 3, 2023 Certification code: PA23002DT

Note to Race Director: Use this Certification Code
in all public announcements relating to your race.

Be It Officially Noted That

Based on examination of data provided by the above named measurer, the course described above and in the map attached is hereby certified as reasonably accurate in measurement according to the standards adopted by the Road Running Technical Council. If any changes are made to the course, this certification becomes void, and the course must then be recertified.


Verification of Course --- In the event a National Open Record is set on the course, or at the discretion of USA Track & Field, a verification measurement may be required to be performed by a member of the Road Running Technical Council. If such a remeasurement shows the course to be short, then all pending records will be rejected and the course certification will be cancelled.

This certification expires on December 31 of the year: **2033**

AS NATIONALLY CERTIFIED BY:

Date: November 4, 2023

Doug Thurston - USATF/RRTC Certifier - P. O. Box 2922, Santa Fe NM 87504
(916) 802-7668 - tallmtnbiker@yahoo.com



St. Luke's D&L RaceFest

HALF MARATHON COURSE CERTIFICATION MAP

Measured August 11, 2023 by: Doug Thurston, World Athletics/AIMS/USATF A Level Measurer and Michael Drabenstott
 Measurer Contact: Doug Thurston, Phone: 916-802-7668 Email: tallmnhbiker@yahoo.com
 Measured using *shortest possible route unless noted otherwise.*

START LINE

START

HALF MARATHON COURSE ROUTE

1

HALF MILE MARKER

FINISH

FINISH LINE


START: On Main Street 2-feet south of manhole cover in driveway/entrance to parking lot for condos at 621 Main Street on the west side across from window with sign for St. Luke's Plastic & Reconstructive Surgery center on the west side of road and north of Broad Street.

FINISH: On Larry Holmes Drive in Easton, southwest of Christmas Tree in Scott Park and 13-feet southwest of manhole cover northeast of "Speed Limit 25 MPH" sign and across from parking area/zone 12002.

Restriction Note: Restriction Note: Please see course turn by turn for full details on road and trail use directional.

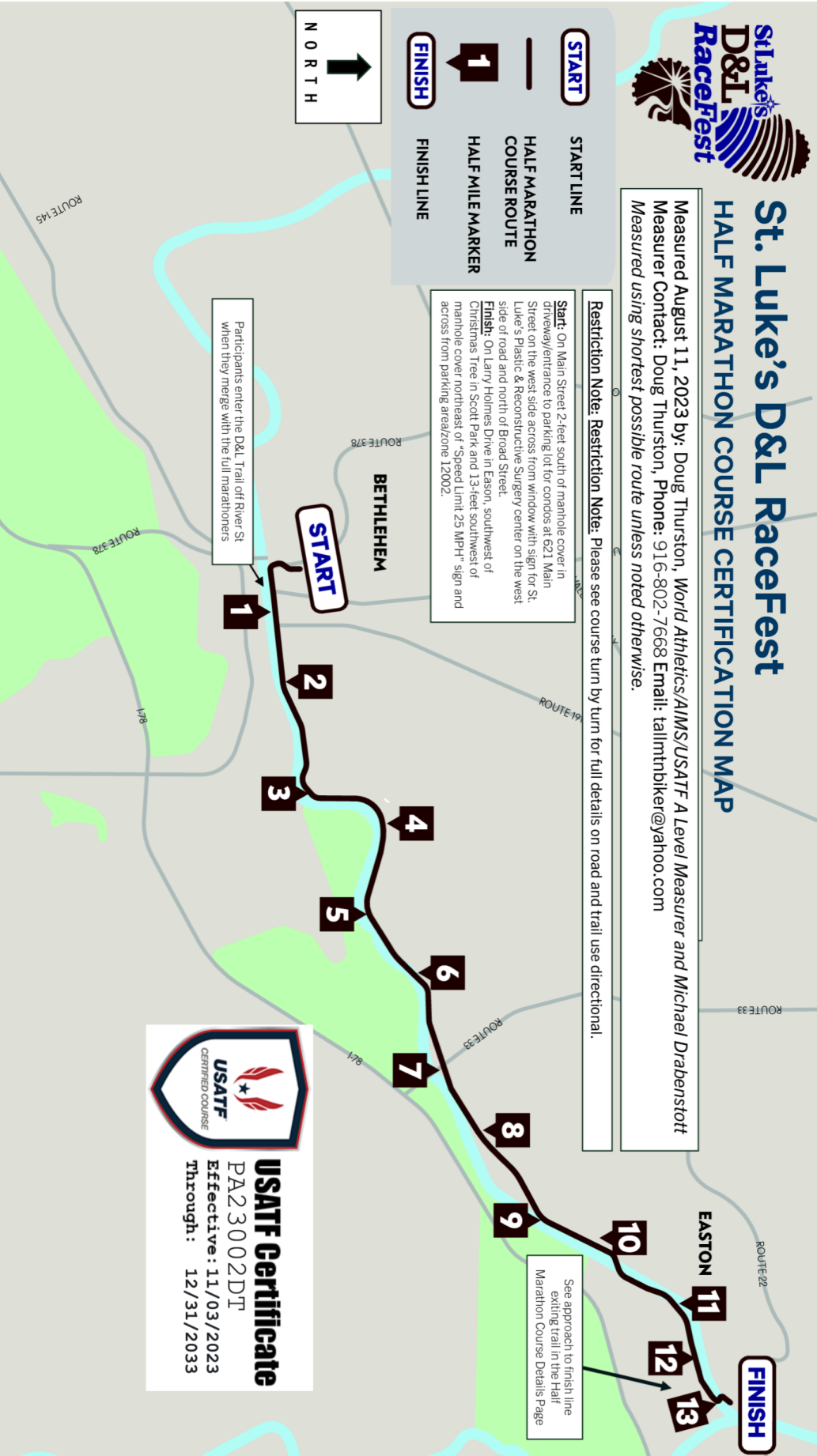
Participants enter the D&L Trail off River St when they merge with the full marathoners

See approach to finish line exiting trail in the Half Marathon Course Details Page



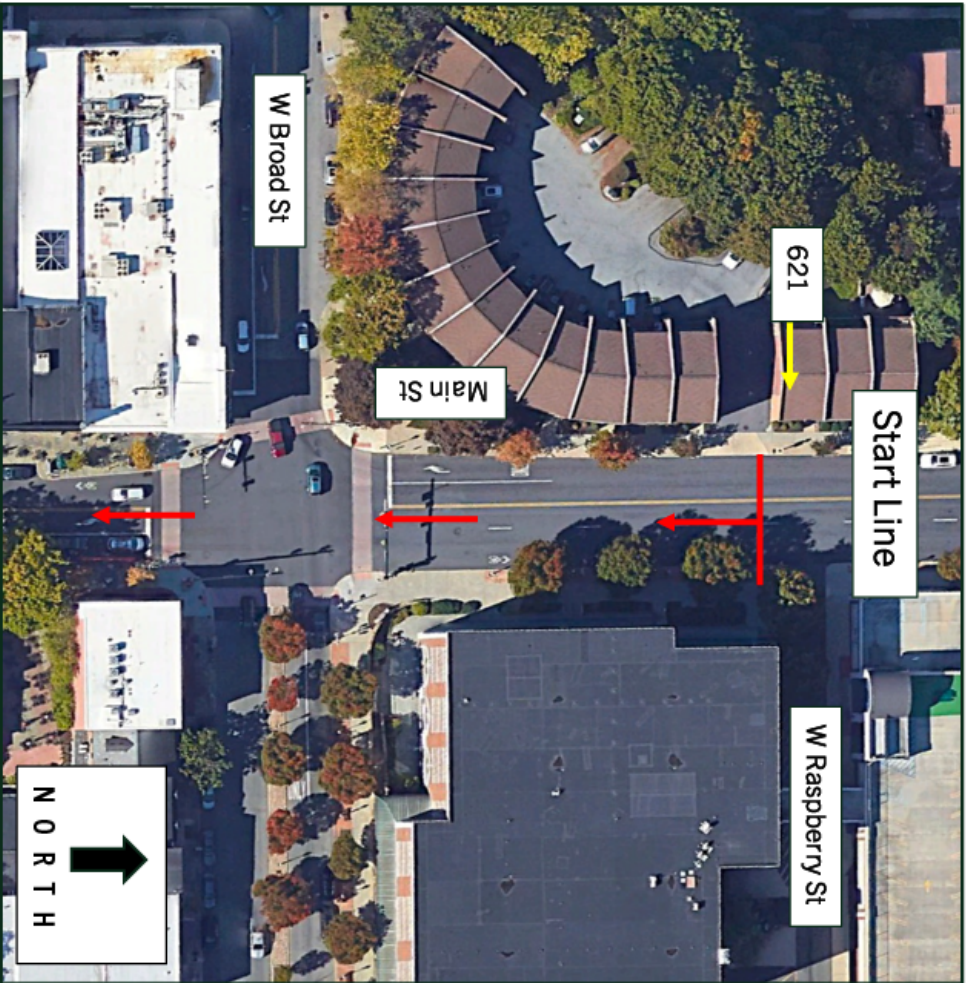
USATF Certificate
 PA23002DT
 Effective: 11/03/2023
 Through: 12/31/2023

NORTH ↑

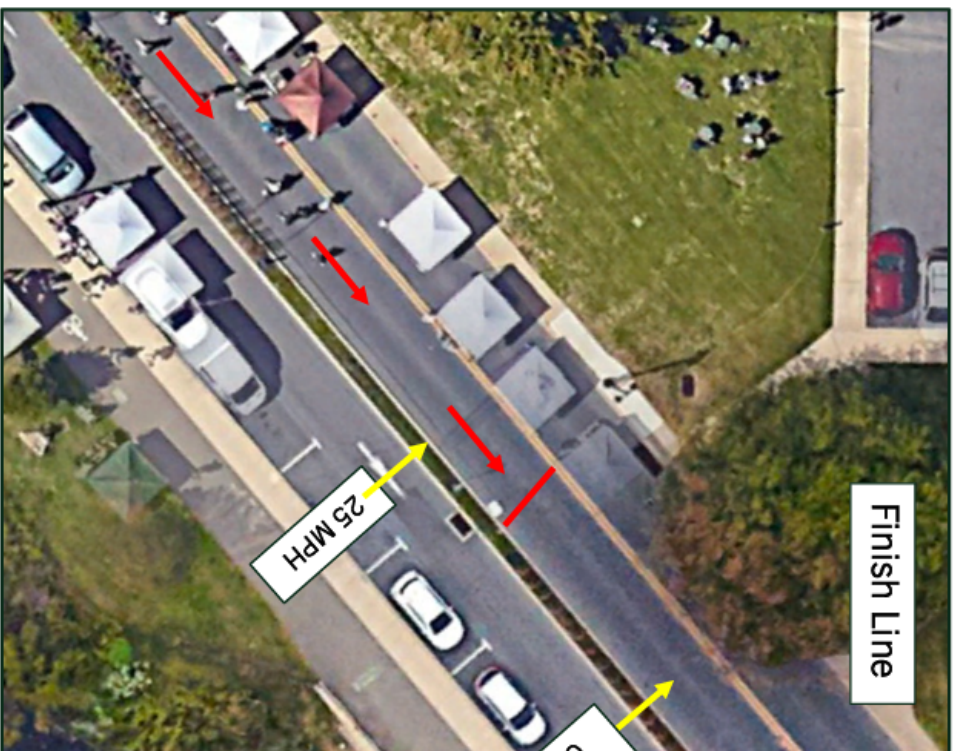




HALF MARATHON START & FINISH LINES



Start: On Main Street 2-feet south of manhole cover in driveway/entrance to parking lot for condos at 621 Main Street on the west side across from window with sign for St. Luke's Plastic & Reconstructive Surgery center on the west side of road and north of Broad Street.



Finish: On Larry Holmes Drive in Easton, southwest Scott Park and 13-feet southwest of manhole cover Limit 25 MPH" sign and across from parking area/z



HALF MARATHON COURSE DETAIL



Finish Line

On approach to finish exiting the trail participants go UNDER 611 and then turn right to go OVER the Leigh River on top.

D&L Trail Exit to Finish Line

St. Luke's D & L RaceFest Half Marathon, 21.0975 km, Bethlehem to Easton, PA

Measured August 11, 2023, by Doug Thurston, World Athletics/AIMS/USATF Level A measurer, contact (916) 802-7668, tallmtnbiker@yahoo.com; and Michael Drabenstott.

Course Locations

Start) On Main Street 2-feet south of manhole cover in driveway/entrance to parking lot for condos at 621 Main Street on the west side across from window with sign for St. Luke's Plastic & Reconstructive Surgery center on the west side of road and north of Broad Street.

Mile 1) On D & L Canal Trail 20-feet west of (before) telephone pole 65933/S47626 on south side and 200-feet west of (before) Sand Island bridge.

Mile 2) On D & L Canal Trail on trail marked on tree on the north side of trail.

Mile 3) On D & L Canal Trail marked on tree on the south side of trail.

Mile 4) On D & L Canal Trail next to Mule Barn and across from "Freemansburg Lock 44" sign.

Mile 5) On D & L Canal Trail painted on large tree on north side.

Mile 6) On D & L Canal Trail on winding section of path and painted on stump/fallen log on south side of trail.

Mile 7) On D & L Canal Trail on gravel section of road 200-feet east of (past) old house with "warning security cameras in use" sign on south side.

Mile 8) On D & L Canal Trail at park bench on north side of trail, just east (past) spur with Palmer Bike Path.

Mile 9) On D & L Canal Trail 150-feet west of (before) mile marker 62.5.

Mile 10) On D & L Canal Trail 150-feet east of (past) large U-shaped concrete retaining wall on north side of trail.

Mile 11) On D & L Canal Trail across from open area with brick three-story building on north side of river.

Mile 12) On D & L Canal Trail 150-feet west of (before) mile market 59.5 on the trail, water side.

Mile 13) On Larry Holmes Drive across from Northampton County Assistance office building, even with the word "Northampton" on the sign on the building.

Finish) On Larry Holmes Drive in Easton, southwest of Christmas Tree in Scott Park and 13-feet southwest of manhole cover northeast of "Speed Limit 25 MPH" sign and across from parking area/zone 12002.

Half Marathon Course Turn by Turn

START - Main St & W Raspberry St
RIGHT River St/Marathon &^ Half Marathon Course Merge HERE
Participants go under Minsi Trail Bridge
Participants go under Freemansburg Bridge
LEFT at Bethlehem Boating Club/Hope Rd/ RIGHT back on Trail
Participants go under Gene Hartzell Bridge/Hwy 33
Participants go under S 25th St
RIGHT Hill Rd/ LEFT back onto the Trail
Participants go under S 3rd St
Participants enter S Delaware Drive
RIGHT S 3rd St
RIGHT Larry Holmes Drive
FINISH - Larry Holmes Drive at Scott Park