



*Road Running Technical Council
USA Track & Field
Measurement Certificate*



Name of the course St. Luke's Half Marathon Distance 21.0975 km

Location (state) PA (city) Allentown

Type of course: Road Race

Measuring Methods: Bicycle

Measured By Doug Thurston, P. O. Box 2922, Santa Fe, NM 87504, tallmtnbiker@yahoo.com, 916-802-7668

Race Contact Leslie Billowitch, PO Box 592, Allentown, PA 18105, 484-894-1795, racedirector@stlukeshalfmarathon.com

Date(s) when course measured: 12/04/2023

Number of measurements of entire course: 2 Course Configuration: Series of different loops

Elevation (meters above sea level) Start 106.70 Finish 91.40 Lowest 73.10 Highest 106.70

Straight line distance between start and finish 588m Drop 0.73 m/km Separation 2.79 %

Type of surface: Paved 83 % Dirt 0 % Gravel 15.5 % Grass 0 % Track 1.5 %

Effective date of certification: February 16, 2024 Certification code: PA24002DT

Note to Race Director: Use this Certification Code
in all public announcements relating to your race.

Be It Officially Noted That

Based on examination of data provided by the above named measurer, the course described above and in the map attached is hereby certified as reasonably accurate in measurement according to the standards adopted by the Road Running Technical Council. If any changes are made to the course, this certification becomes void, and the course must then be recertified.

Verification of Course --- In the event a National Open Record is set on the course, or at the discretion of USA Track & Field, a verification measurement may be required to be performed by a member of the Road Running Technical Council. If such a remeasurement shows the course to be short, then all pending records will be rejected and the course certification will be cancelled.

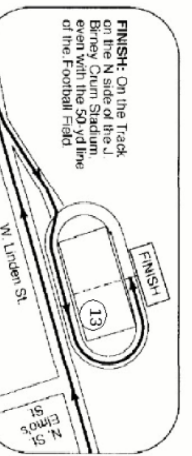
This certification expires on December 31 of the year: **2034**

AS NATIONALLY CERTIFIED BY:

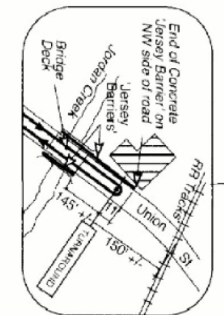
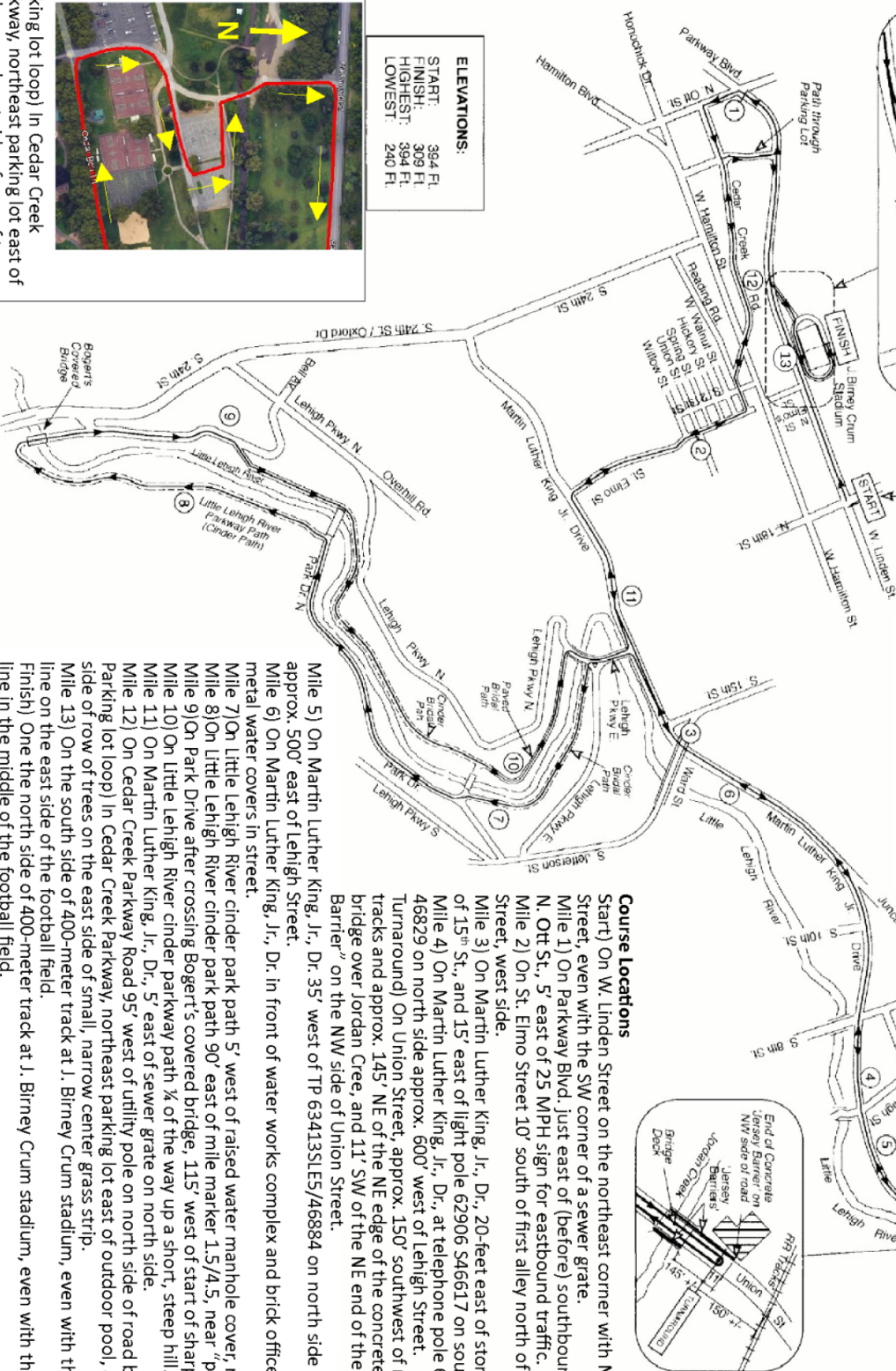
Date: February 16, 2024

Doug Thurston - USATF/RRTC Certifier - P. O. Box 2922, Santa Fe NM 87504
(916) 802-7668 - tallmtnbiker@yahoo.com

St. Luke's Half Marathon, 13.10938 miles/21.0975 km, Bethlehem, PA
 Measured December 1, 2023, by Doug Thurston, World Athletics/AIMS/USATF Level A measurer, contact (916) 802-7668, tallmtrbiker@yahoo.com, and Karen Kulikowski.

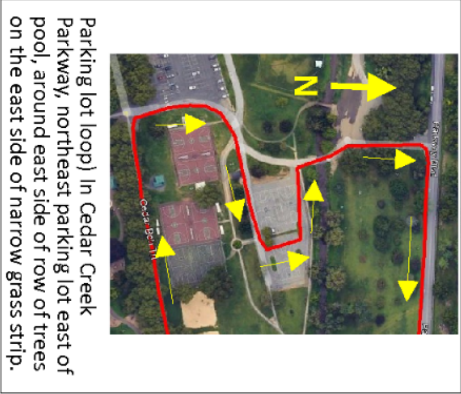


USATF Certificate
 PA24002DT
 Effective: 02/16/2024
 Through: 12/31/2034



ELEVATIONS:

START:	394 Ft.
FINISH:	309 Ft.
HIGHEST:	394 Ft.
LOWEST:	240 Ft.



- Course Locations**
- Start) On W. Linden Street on the northeast corner with NE 18th Street, even with the SW corner of a sewer grate.
 - Mile 1) On Parkway Blvd. just east of (before) southbound turn on N. Ott St., 5' east of 25 MPH sign for eastbound traffic.
 - Mile 2) On St. Elmo Street 10' south of first alley north of Union Street, west side.
 - Mile 3) On Martin Luther King, Jr., Dr., 20-feet east of storm drain east of 15th St., and 15' east of light pole 62906 546617 on south side.
 - Mile 4) On Martin Luther King, Jr., Dr., at telephone pole 633155 46829 on north side approx. 600' west of Lehigh Street.
 - Turnaround) On Union Street, approx. 150' southwest of railroad tracks and approx. 145' NE of the NE edge of the concrete deck of the bridge over Jordan Cree, and 11' SW of the NE end of the "Jersey Barrier" on the NW side of Union Street.
 - Mile 5) On Martin Luther King, Jr., Dr. 35' west of TP 63413SLE5/46884 on north side of street, approx. 500' east of Lehigh Street.
 - Mile 6) On Martin Luther King, Jr., Dr. in front of water works complex and brick office building at metal water covers in street.
 - Mile 7) On Little Lehigh River cinder park path 5' west of raised water manhole cover, north side.
 - Mile 8) On Little Lehigh River cinder park path 90' east of mile marker 1.5/4.5, near "planet walk."
 - Mile 9) On Park Drive after crossing Bogert's covered bridge, 115' west of start of sharp left curve.
 - Mile 10) On Little Lehigh River cinder parkway path 1/4 of the way up a short, steep hill.
 - Mile 11) On Martin Luther King, Jr., Dr., 5' east of sewer grate on north side.
 - Mile 12) On Cedar Creek Parkway Road 95' west of utility pole on north side of road by the dam. Parking lot loop) in Cedar Creek Parkway, northeast parking lot east of outdoor pool, around east side of row of trees on the east side of small, narrow center grass strip.
 - Mile 13) On the south side of 400-meter track at J. Birney Crum stadium, even with the 25-yard line on the east side of the football field.
 - Finish) One the north side of 400-meter track at J. Birney Crum stadium, even with the 50-yard line in the middle of the football field.