



**Road Running Technical Council
USA Track & Field**

Measurement Certificate



Name of the course Project 13.1 2026 Distance 21.0975 km
 Location (state) NY (city) Valley Cottage
 Type of course: Road Race
 Measuring Methods: Steel Tape & Bicycle
 Measured By Matt Slocum, PO Box 3005, Montclair, NJ 07043, matt@precisioncoursedesign.com, 917-725-1709
 Race Contact Cooper Knowlton, Trials of Miles Racing, cooper@trialsomilesracing.com
 Date(s) when course measured: 3/10/2026
 Number of measurements of entire course: 2 Course Configuration: out and back (1x) + loop (4x)
 Elevation (meters above sea level) Start 46.00 Finish 46.00 Lowest 45.00 Highest 49.00
 Straight line distance between start and finish 0m Drop 0.00 m/km Separation 0.00 %
 Type of surface: Paved 100 % Dirt 0 % Gravel 0 % Grass 0 % Track 0 %
 Effective date of certification: March 11, 2026 Certification code: NY26002MNS

Note to Race Director: Use this Certification Code in all public announcements relating to your race.

Be It Officially Noted That

Based on examination of data provided by the above named measurer, the course described above and in the map attached is hereby certified as reasonably accurate in measurement according to the standards adopted by the Road Running Technical Council. If any changes are made to the course, this certification becomes void, and the course must then be recertified.

Verification of Course --- In the event a National Open Record is set on the course, or at the discretion of USA Track & Field, a verification measurement may be required to be performed by a member of the Road Running Technical Council. If such a remeasurement shows the course to be short, then all pending records will be rejected and the course certification will be cancelled.

This certification expires on December 31 of the year: **2036**

AS NATIONALLY CERTIFIED BY:



Date: March 11, 2026

Matt Slocum - USATF/RRTC Certifier - PO Box 3005, Montclair NJ 07043
 (917) 725-1709 - matt@precisioncoursedesign.com

PROJECT 13.1 2026

21.0975 km | Valley Cottage, NY



USATF Certificate
 NY26002MNS
 Effective: 03/11/2026
 Through: 12/31/2036

This course is run entirely on the asphalt park path and reflects the changes to the path routing near Lot 6 (construction completed Spring 2026)
 Map is not to scale

Measured by Matthew Slocum
 10 March 2026
 matt@precisioncoursedesign.com
 Measured using the full width of the path and the shortest possible route



This course consists of an initial 2.1056688 km out-and-back segment (shown in dashed blue | 1.0528344 km each way), followed by four complete loops (shown in red). Each full lake loop is 4.747959868 km.

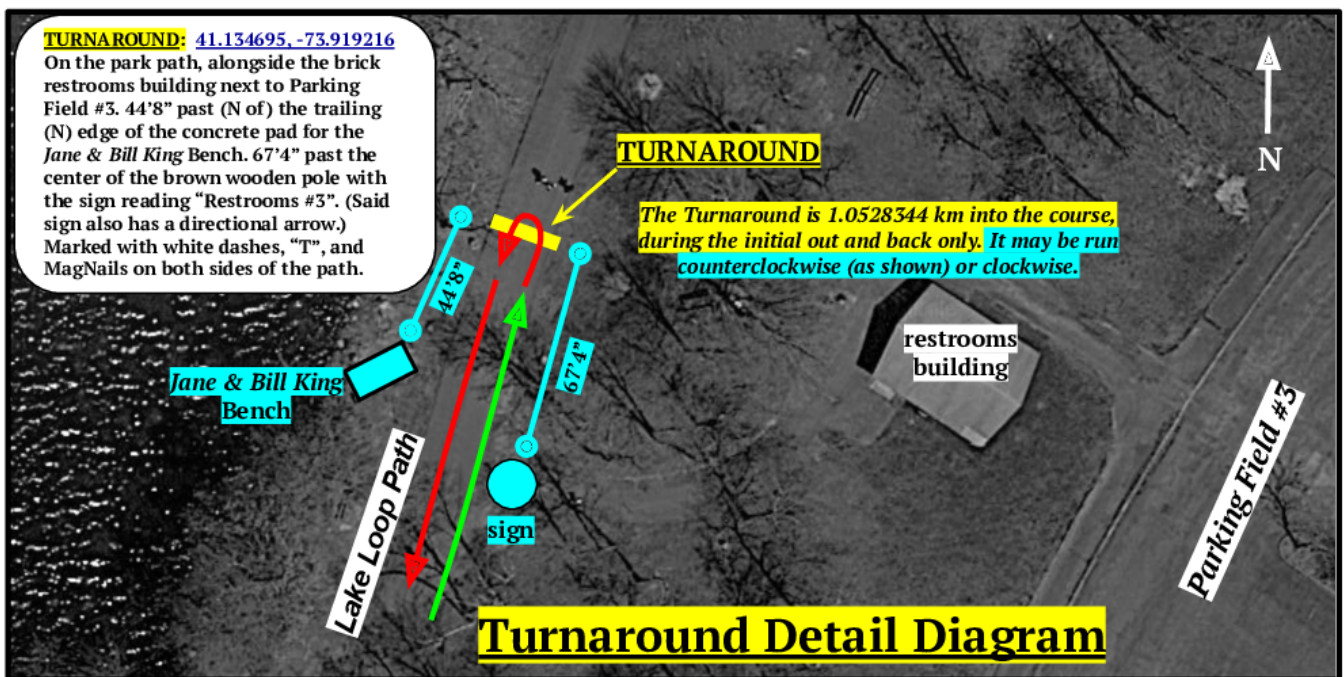
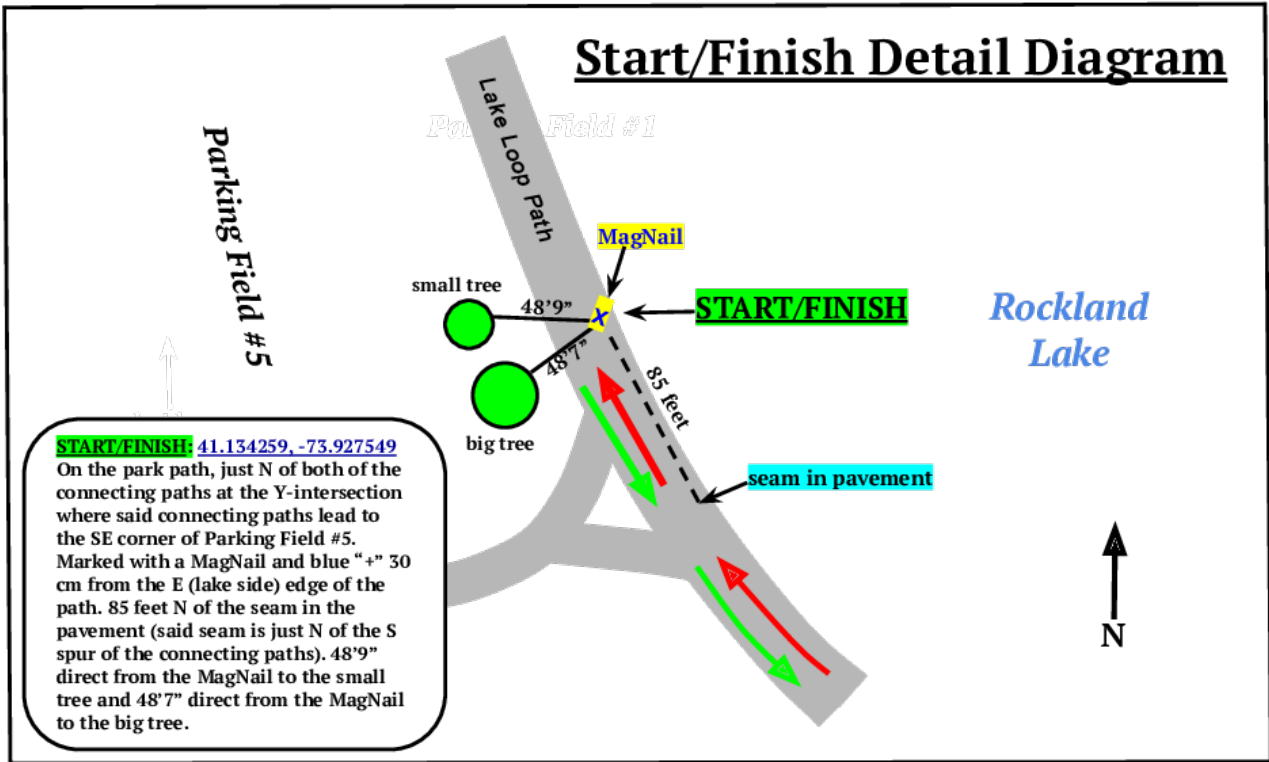
See Supplemental Pages for Start/Finish Detail Diagram, Turnaround Detail Diagram, Supplement Detail A + B, and Intermediate Splits

START/FINISH: 41.134259, -73.927549 | On the park path, just N of both of the connecting paths at the Y-intersection where said connecting paths lead to the SE corner of Parking Field #5. Marked with a MagNail and blue "+" 30 cm from the E (lake side) edge of the path. 85 feet N of the seam in the pavement (said seam is just N of the S spur of the connecting paths). 48'9" direct from the MagNail to the small tree and 48'7" direct from the MagNail to the big tree. See the Start/Finish Detail Diagram.

TURNAROUND POINT: 41.134695, -73.919216 | On the park path, alongside the brick restrooms building next to Parking Field #3. 44'8" past (N of) the trailing (N) edge of the concrete pad for the Jane & Bill King Bench. 67'4" past the center of the brown wooden pole with the sign reading "Restrooms #3". (Said sign also has a directional arrow.) Marked with white dashes, "T", and MagNails on both sides of the path. See the Turnaround Detail Diagram.

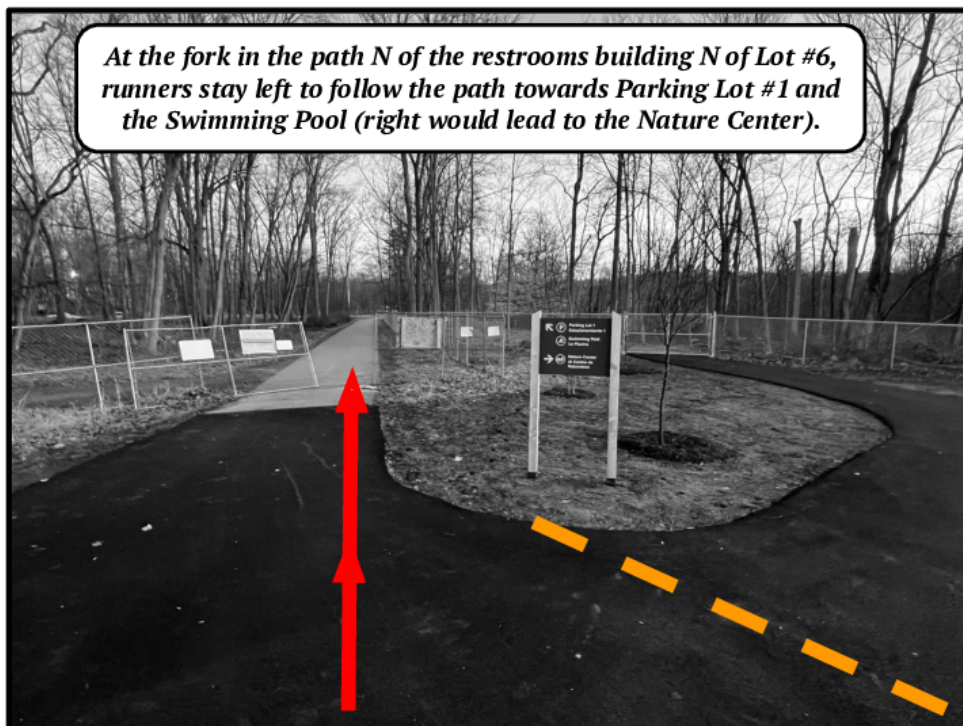
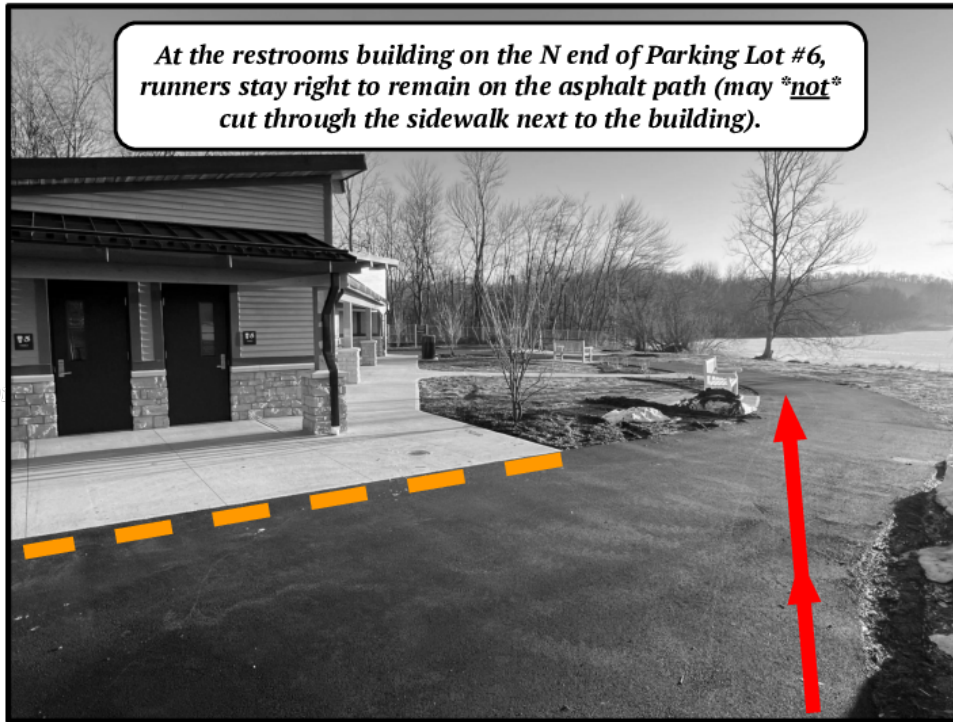
PROJECT 13.1 2026

Start/Finish & T/A Detail Diagrams



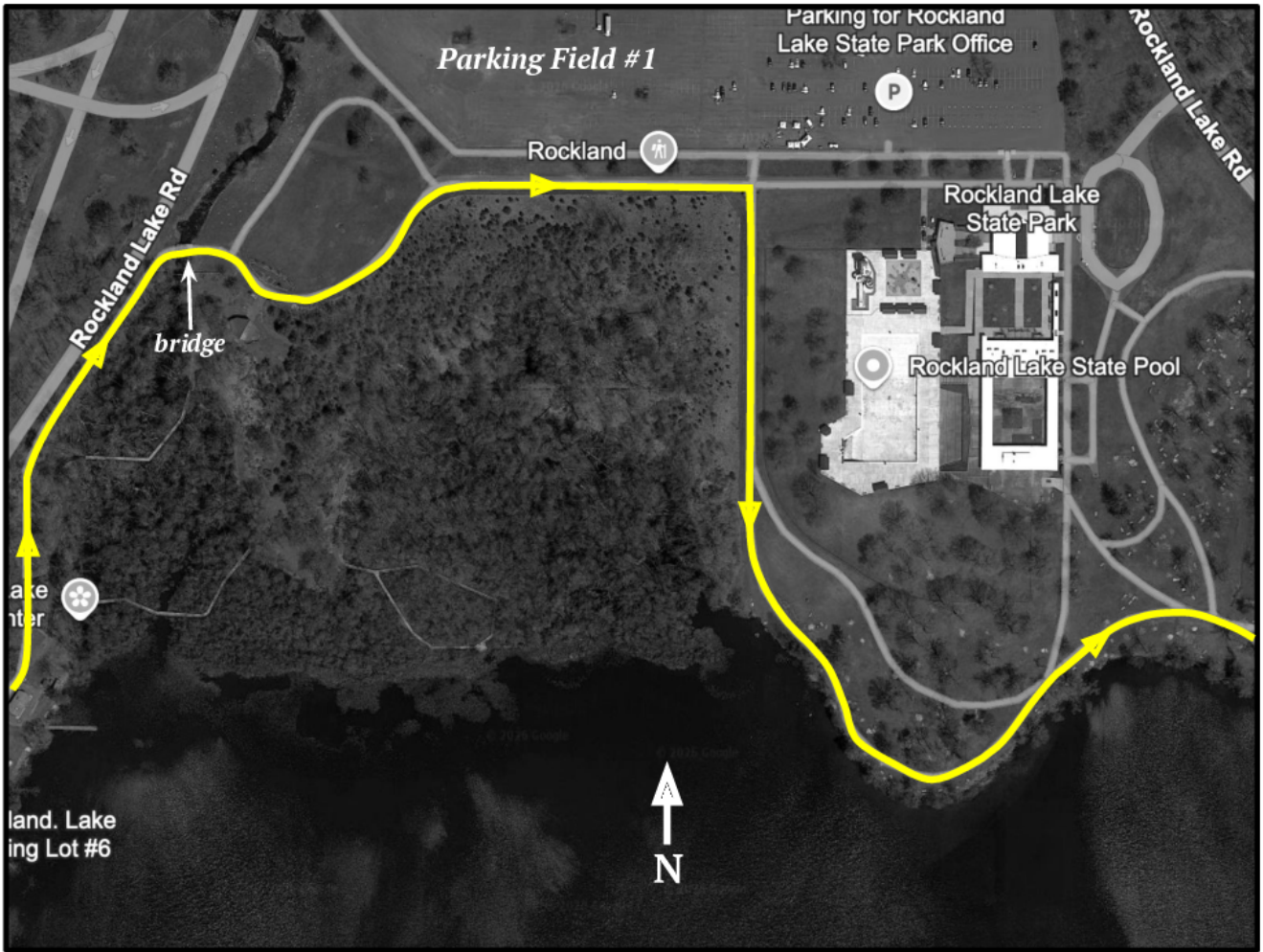
PROJECT 13.1 2026

Detail A



PROJECT 13.1 2026

Detail B



Project 13.1 2026 | *Intermediate Splits*

(The integral loop is approximately 80 meters short of 3 miles (i.e., Mile 4 is ~80 meters “past” Mile 1, Mile 7 is ~80 meters “past” Mile 4, etc.). For ease of course set up, mile mark descriptions are included below in order of these clusters, i.e., as they fall in a single, clockwise, integral lake loop, starting from the Turnaround. All locations are on the paved park path.)

Turnaround: (1.0528344 km, during the initial out and back only) [41.134695, -73.919216](#) | On the park path, alongside the brick restrooms building next to Parking Field #3. 44’8” past (N of) the trailing (N) edge of the concrete pad for the *Jane & Bill King* Bench. 67’4” past the center of the brown wooden pole with the sign reading “Restrooms #3”. (Said sign also has a directional arrow.) Marked with white dashes, “T”, and MagNails on both sides of the path. See the Turnaround Detail Diagram.

Mile 1: [41.131286, -73.923344](#) | After the Turnaround Point and past (W of) Parking Field #4 and the Rockland Rowing Club. Near the leading (E) edge of the grass triangle (on the runners’ left), which is bordered by the two curved/diagonal paths.

Mile 4: [41.131590, -73.924252](#) | 15 feet before (SE of) the first culvert before the “Hot Coals” box.

Mile 7: [41.132123, -73.924911](#) | 115 feet past (NW of) the “Hot Coals” box (on the runners’ right).

Mile 10: [41.132754, -73.925393](#) | 5’6” past (NW of) the green water fountain (on the runners’ left).

Mile 13: [41.133276, -73.925953](#) | 57 feet past (NW of) the second grill (on the runners’ right) past the green water fountain (which is on the runners’ left).

Mile 2: [41.143871, -73.927431](#) | Alongside Parking Lot #6, 20’9” past (N of) the trailing (N) edge of the “Rockland Road Runners” bench (on the runners’ right).

Mile 5: [41.144439, -73.927023](#) | Near the trailing (N) edge of the new restrooms building (on the runners’ left), 17 feet past (N of) the “Fix It” bike repair stand (on the runners’ right). Also near the leading (S) edge of the Y-intersection where the path on the right leads to the Nature Center and the path on the left (followed by the runners) continues towards Parking Field #1.

Mile 8: [41.145141, -73.926956](#) | Roughly even with the beginning (S edge) of the center grass divider/median in the road (on the runners’ left).

Mile 11: [41.145818, -73.926657](#) | On the W side of the Nature Center, 98 feet past (N of) the bend in the fence N of the toll booth.

Mile 3: [41.142522, -73.916440](#) | 29 feet before (NW of) the leading (NW) edge of the southernmost intersecting path connecting from Parking Field #2.

Mile 6: [41.142001, -73.915844](#) | On the right hand curve past (S of) Parking Field #2. Even with the last (southernmost) picnic table on the runners’ left and 20’6” before (NW) of the first culvert S of Parking Field #2.

Mile 9: [41.141267, -73.916120](#) | Past (S of) a boulder dump site and 7 feet past the tree on the runners’ right marked “Sweet Gum Tree”.

Mile 12: [41.140611, -73.916344](#) | 79 feet past (S of) the stone wall and 52 feet past the culvert.